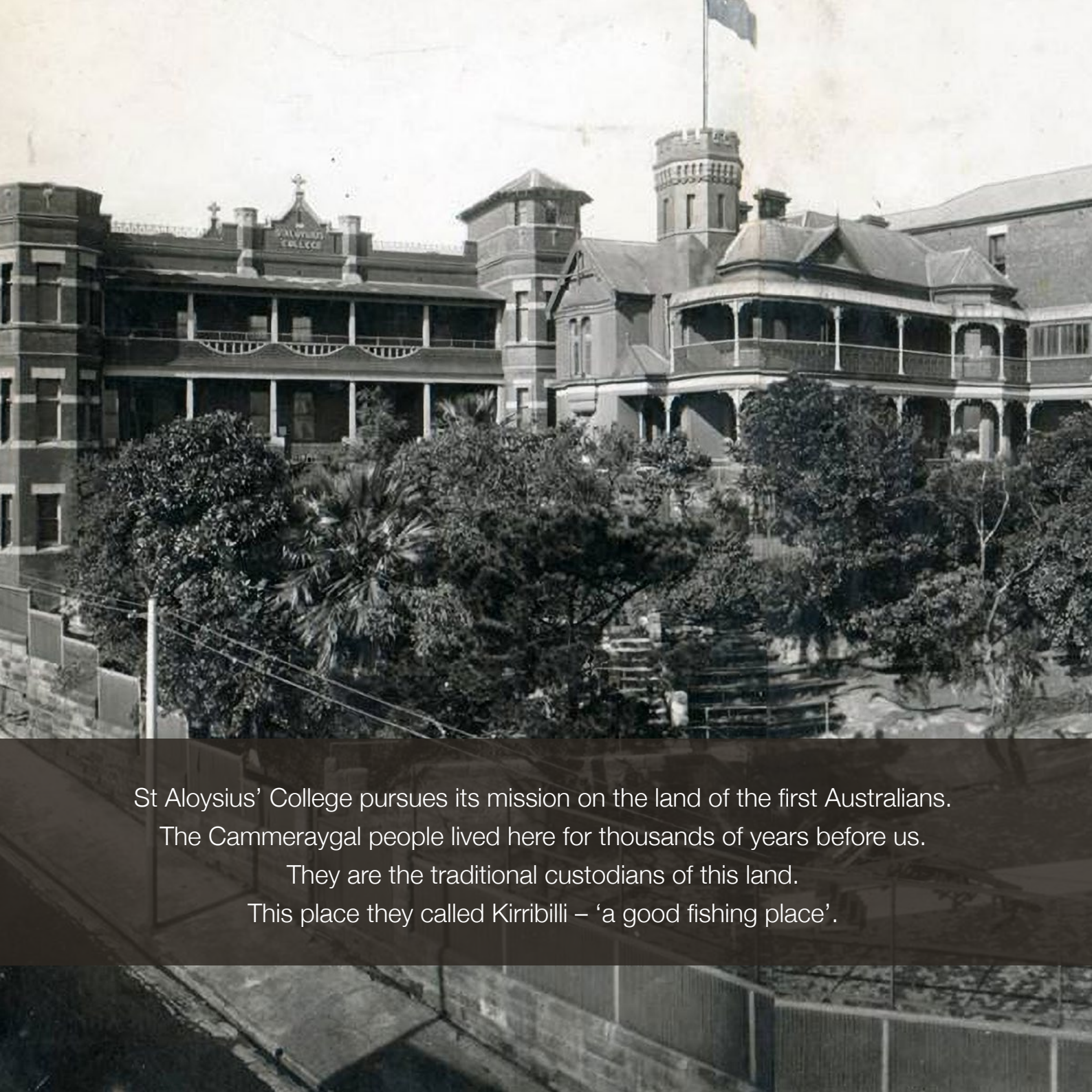


Human Excellence



St Aloysius' College | **Strategic Plan 2021-2025**



Human Excellence

As a Catholic school, St Aloysius' College should never be content with the *status quo*. Instead, we should be restless for excellence – human excellence. Excellence as defined by our nature as a Christian community in the Jesuit tradition, is neither some arbitrary number or index, nor implied comparison with others. Instead, it is a perpetual desire to go more deeply and to see each member of our community flourish in all dimensions of their humanity. We should be constantly driven to pursue the *Magis*.

As a Jesuit school, St Aloysius' College is the inheritor of a 500-year-old living tradition. Its mission remains true – the formation of young men, in partnership with their families, who *seek and find God in all things*, possess *a faith that does justice* and hence are *men for others*. St Aloysius' College seeks to form young men who demonstrate authentic human excellence – competence, conscience, compassion and commitment – the so-called 4Cs. Therefore, human excellence as we define it, is not a destination but a constant journey, a constant striving. Both the *Spiritual Exercises* and the *Constitutions of the Society of Jesus* offer us a path to human excellence through the lens of Ignatian Spirituality.

The College commits to a strategic direction that seeks to maintain our tradition through an innovative approach to our way of proceeding. The approach has three foci. At the heart of this strategy is the individual student, our commitment to his care through *cura personalis*, to his holistic formation and the opportunities he is provided with to develop and demonstrate human excellence as encapsulated by the 4Cs. St Aloysius' holds that the most important factor in a student flourishing (outside of his family) is his teacher. Therefore, we prioritise the support and development of our teachers within this Plan.

Finally, in the increasingly fragile and fractionated world, our Aloysian Family is a vital source of community. This Plan prioritises the opportunity for connection within our shared mission and faith – both locally and globally.

St Aloysius' College pursues its mission on the land of the first Australians.
The Cammeraygal people lived here for thousands of years before us.
They are the traditional custodians of this land.
This place they called Kirribilli – 'a good fishing place'.

Competence • Conscience • Compassion • Commitment

As an inherently resourceful independent Catholic school, we are not seeking a larger volume of programs and works, but, instead, a greater depth to what we undertake. In this, we commit ourselves to deepening demographically our accessibility and inclusiveness – this is another form of excellence distinctive to a Jesuit school. The capacity for a broad range of families to enrol their sons at the College relies upon our relatively moderate fee levels and the strength of our Bursary Program. This Plan commits to both of these two essential drivers of Catholic culture.

As a Christian pilgrim community, we are called to respond to the signs of the times. The disruption of the pandemic has revealed to us both what is important and what is possible. We are called to accommodate, to adapt.

The capacity for technology – a service which has the capacity to be both humane and liberating – to innovate whilst being true to our mission has been manifested in recent times. This Plan commits to fundamentally changing elements of our practice through creative approaches to our core mission.

The pandemic has also taught us precaution, and this extends to what Fr Arturo Sosa SJ (Superior General 2016 –) calls ‘our common home’, creation, and our responsibility to care for the world and our environment. Therefore, we also commit to a communal response to responsible environmental stewardship in our behaviours and in our decisions.

These are both important and possible.

Human Excellence should be considered in companionship with the College’s Capital Master Plan – *Plan Magis*. *Plan Magis* sets the direction for the future physical development of our campuses. The focus of *Plan Magis* is on teaching and learning and the ongoing stewardship of the campuses to support the College’s Jesuit mission and Ignatian charism. The Master Plan provides an overall framework for development over the next two decades, building both on existing opportunities whilst looking to the future and anticipating change for this Jesuit educational ministry.

As *The Boys’ Chapel* sits at the heart of the College in Milsons Point, Jesus sits at the heart of our ethos and identity. Our mission is to offer, to each student, Christ as the model of human life. Our Plan constitutes a renewed commitment for the College to be an expression of Church for all within our community.



Michael Morgan (SAC 1973)
Chair of College Board



Fr Ross Jones SJ
Rector



Mark Tannock
Principal



“Our goal as educators [is] to form men and women of competence, conscience, and compassionate commitment.”

– Fr Peter-Hans Kolvenbach SJ (Superior General 1993-2008), *Letter Regarding the Ignatian Pedagogical Paradigm*, Rome, 1993.



“Jesuit Education should be committed to
human excellence.”

– 10 Global Identifiers of Jesuit Schools, *Jesuit Schools: A Living Tradition in the 21st Century*,
2020.



Our Mission

St Aloysius' College is a Jesuit school for boys providing, in cooperation with families, a Catholic education that:

- Proposes Christ as the model of human life
- Pursues excellence in teaching and learning
- Promotes lifelong learning and spiritual growth





“It is not knowing much, but realising and relishing things interiorly that contents and satisfies the soul.”

– *The Spiritual Exercises*, n 2.



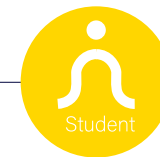
There are three foci to *Human Excellence*:

Teacher Excellence
Student Excellence
Community Excellence



“Jesuits are never content with the *status quo*, the known, the tried, the already existing. They are constantly driven to discover, re-define, and reach out for the *magis*. For us, frontiers and boundaries are not obstacles or ends, but new challenges to be faced, new opportunities to be welcomed.”

– 34th General Congregation of Jesuits, 1995, n 561.



Student Excellence: Boy to Aloysian Man

Guiding Principle:

Forming hope-filled young men for the future who take their Ignatian values into a world that needs them.

Five-Year Strategic Focus:

Deepen the manner in which we form young men within the context of a holistic commitment to a Jesuit education.

Innovations:

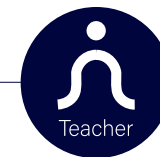
- Challenge and support all students to seek excellence in their lives with a focus on their engagement in, and commitment to, learning and achievement.
- Develop a deliberately designed learning experience for the 'middle years' of schooling.
- Provide renewed opportunities for devotion to the person of Jesus through the practice of Ignatian Spirituality.

- Focus on deepening the formation opportunities that provide healthy rites of passage into male adulthood, authentically addressing the contemporary challenges to adolescent male wellbeing, relationships and identity. Within this, we will prioritise the capacity for deep, respectful relationships with girls and women.
- Utilise technology to simplify, liberate and deepen student learning and offer authentic opportunities for global citizenship, acculturation and inter-religious dialogue.



“Without putting aside the search for scholarly success, excellence in furthering the *Magis* means first the maximum development of the gifts and capacities with which each person is endowed. None of this is intended for egoistic profit, but for the deployment of gifts in the best possible service of others.”

– Fr Peter-Hans Kolvenbach SJ (Superior General 1993-2008),
Contemporary Education in the Spirit of St Ignatius, 2000.



Teacher Excellence: The Ignatian Formator

Guiding Principle:

Accompanying our teachers in pursuing meaning and excellence in their ministry as Ignatian educators.

Five-Year Strategic Focus:

Redesign the nature of teaching at the College and deepen the capacity of our companions to seek and deliver excellence in teaching, learning and Ignatian formation.

Innovations:

- Utilising technology, redesign the nature of teaching and working at St Aloysius' College.
- Embed the Ignatian Pedagogical Paradigm through the SAC Teaching and Learning Framework in all aspects of teacher practice.

“The continual interplay of Experience, Reflection and Action in the teaching-learning dynamic of the classroom lies at the heart of Ignatian pedagogy ... as we accompany the learner on his or her journey to becoming a fully human person.”

– *Ignatian Pedagogy: a Practical Approach*, 1993.



“The delegates commit to urge the schools to reflect on the nature of human excellence (the 4Cs) so that academic success can be understood in its proper context.”

– *The Rio Papers* – International Congress for Jesuit Education Delegates Rio de Janeiro, 2017.



Community Excellence: Our Collective Striving for the *Magis*

Guiding Principle:

Engendering a spirituality that cultivates engagement, connections and relationships between self, others, God and creation.

- Prioritise our Old Boys and Past Parents with deeper engagement through communication technology.
- Establish a sustainable international Formation Program for students and staff, engaging with the global network of Jesuit schools.

Five-Year Strategic Focus:

Deepen the Ignatian formation of our local Aloysian Family and utilise our resources to broaden our connection with the global network of Jesuit schools.

Innovations:

- Develop a more comprehensive approach to forming local community for families, ensuring access and equity.
- Resource a College-wide response to care for our common home and make this a distinctive feature of our works.



“The pursuit of academic excellence is appropriate in a Jesuit school, but only within the larger context of human excellence.”

– *Characteristics of Jesuit Education*, 1986, n 107.



“Jesuit education witnesses to excellence.”

– *Characteristics of Jesuit Education*, 1986, nn 113-116.



St Aloysius' College | 47 Upper Pitt Street, Milsons Point, NSW 2061 | 9922 1177

staloysius.nsw.edu.au